

# AC ISOLATOR SWITCH

EAH1-125

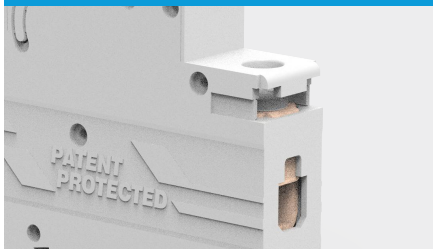
Standard: IEC60947-3    

- IEC 60947-3
- Over 20,000 cycles mechanical and electrical endurance operation



## Detail features

### Fit for various connection terminal



Choice to use Busbar or cable in the same terminal, provides reliable connection

### Red/Green indication



Clear indication of the ON/OFF switch status.

## Select Code

$\frac{E}{1}$   $\frac{A}{2}$   $\frac{H}{3}$   $\frac{1}{4}$  -  $\frac{125}{5}$  /  $\frac{\square}{6}$  /  $\frac{\square}{7}$

Electrical Features		
Code	Name	Description
1	ASwich brand	E
2	AC	A
3	Isolator Switch	H
4	Series	1:Series1
5	Frame Current	125
6	Rated current	40:40A 50:50A 63:63A 80:80A 100:100A 125:125A
7	Poles	1:1P 2:2P 3:3P 4:4P

## Technical Data

Electrical Features	
Rated current (In)	40A 50A 63A 80A 100A 125A
Pole	1P 2P 3P 4P
Rated voltage (Ue)	1P: 240V~ 2/3/4P:415V~
Insulation voltage (Ui)	500V
Rated frequency	50/60Hz
Rated short-time withstand current (Icw)	12Ie 1s
Rated making and breaking capacity	3Ie, 1.05Ue, cos φ =0.65
Rated short circuit making capacity	20Ie, t=0.1s
Using the categories	AC-22A
Electrical and Mechanical life	20000
Terminal size top/bottom for cable	25mm <sup>2</sup>
Tightening torque	2.5N·m

## Dimensions(mm)

