



This document has been
printed on ecological paper

ASwich

Safety Is On

Email: contact@aswich.com
Fax: +86-21-60250600

As standards, specifications and designs change
from time to time, please ask for confirmation of the
information given in this publication.

www.aswich.com

Aswich all rights reserved.

AC Surge Protection Device

EAP SERIES AC SPD T3 Series

Leading Manufacturer Protects Solar Power Safety

Rev1.0 2022/07/22



AC Surge Protection Device

EAP SERIES AC SPD T3 Series



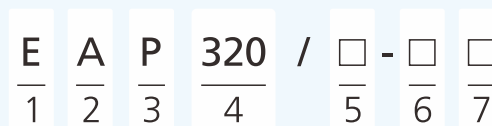
Product Application

EAP Series Surge Protection Device was designed and manufactured, complying standard GB/T18802.1 /EN 61643-11 , Rated voltage 275V~, 320V~, 385V~, 420V~, Maximum discharge current 10kA, High Energy Varistor, high effective for lightning protection.

Product Benefits

- Prewired Modular Complete Unit, Consisting of A Base Part and Plug-in Protection Modules.
- Plug-in Protection Module, Easily Installation and Maintenance.
- High Energy Varistor, Response Time Less Than 25 Nanosecond
- Optional Remote Signalling Contact(FM) for Monitoring Device (Floating Changeover Contact)

Select Code



Code	Name	Description
1	ASwisch brand	E
2	AC	A
3	Product Code	P: Surge Protector
4	Voltage	275:275V 320:320V 385:385V 420:420V
5	I _{max}	10:10kA
6	Pole	1:1P 2:2P 3:3P 4:4P 5:1+NPE 6:3+NPE
7	Remote signal	R: with RC Nil: with out RC

Appearance Introduction



EAP SERIES AC SPD T3 Series

Technical Data



IEC Electrical

Nominal AC Voltage (50/60Hz)	U_o/U_n	230V			
Maximum Continuous Operating Voltage (AC)	U_c	275V	320V	385V	420V
Nominal Discharge Current (8/20 μ s)	I_n	5kA	5kA	5kA	5kA
Maximum Discharge Current (8/20 μ s)	I_{max}	10kA	10kA	10kA	10kA
Withstand on Combination waveform-Class III test	U_{oc}	10kV	10kV	10kV	10kV
Voltage Protection Level	U_p	1000V	1000V	1200V	1300V
Response Time	t_A	< 25ns			
Back-Up Fuse (max)		125A gL / gG			
Short-Circuit Current Rating (AC)	I_{SCCR}	25kA			
TOV Withstand 5s	U_T	335V			
	U_T	440V			
TOV 120min	Mode	Safe Fail			
Number of Ports		1			

UL Electrical

Maximum Continuous Operating Voltage (AC)	MCOV	275V	320V	385V	420V
Voltage Protection Rating	VPR	900V	1000V	1200V	1400V
Nominal Discharge Current (8/20 μ s)	I_n	5kA	5kA	5kA	5kA
Short-Circuit Current Rating (AC)	I_{SCCR}	25kA	25kA	25kA	25kA

Mechanical & Environmental

Operating Temperature Range	T_a	-40°F to +158°F [-40°C to +70°C]			
Permissible Operating Humidity	RH	5%...95%			
Atmospheric pressure and altitude		80k Pa ... 106k Pa / -500m ... 2000m			
Terminal Screw Torque	M_{max}	39.9 lbf-in [2.0~2.5 N·m]			
Conductor Cross Section (max)		2 AWG (Solid, Stranded) / 4 AWG (Flexible)			
		35mm ² (Solid, Stranded) / 25mm ² (Flexible)			
Mounting		35mm DIN Rail, EN 60715			
Degree of Protection		IP20(built-in)			
Housing Material		Thermoplastic: Extinguishing Degree UL 94 V-0			
Thermal Protection		Yes			
Operating State / Fault Indication		Green: ok / Red: failure			
Remote Contacts (RC)		Optional			
RC Switching Capacity		AC:250V / 0.5A; DC:250V / 0.1A; 125V / 0.2A; 75V / 0.5A			
RC Conductor Cross Section (max)		16AWG (Solid) / 1.5mm ² (Solid)			

AC Surge Protection Device

EAP SERIES AC SPD T3 Series

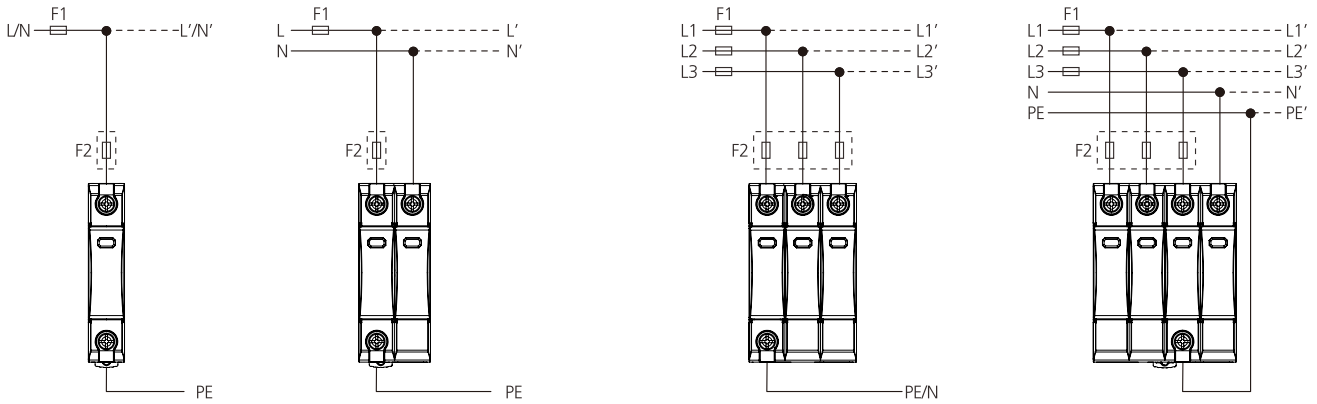
Technical Data



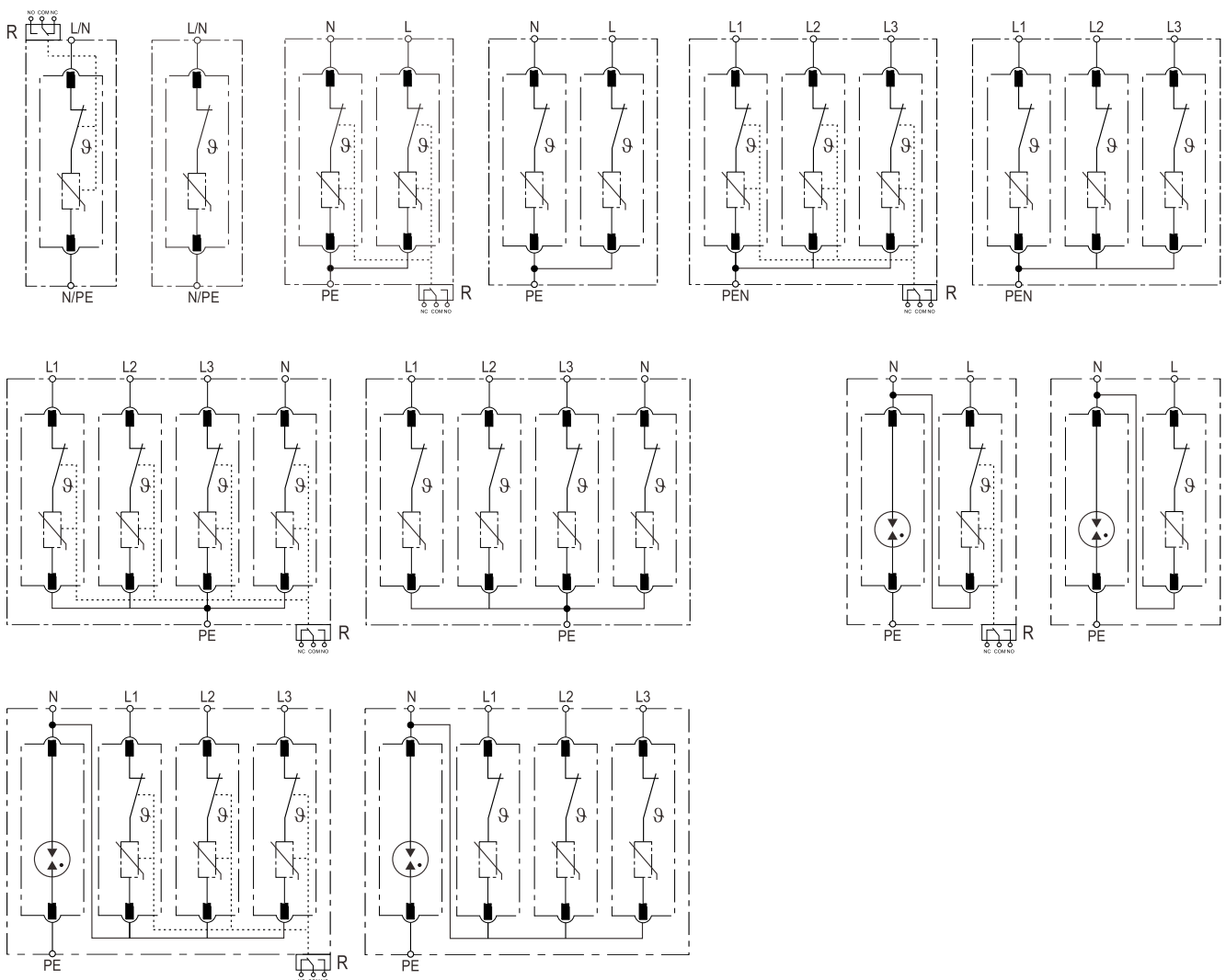
Product model					
IEC Electrical					
Nominal AC Voltage (50/60Hz)	U_o/U_n	230V			
Maximum Continuous Operating Voltage (AC)	U_c	275V/255V	320V/255V	385V/255V	420V/255V
Nominal Discharge Current (8/20 μ s)	I_n	5kA/5kA	5kA/5kA	5kA/5kA	5kA/5kA
Maximum Discharge Current (8/20 μ s)	I_{max}	10kA/10kA	10kA/10kA	10kA/10kA	10kA/10kA
Withstand on Combination waveform-Class III test	U_{oc}	10kV	10kV	10kV	10kV
Voltage Protection Level	U_p	< 1000V / 1000V	< 1000V / 1000V	< 1200V / 1000V	< 1300V / 1000V
Response Time	t_A	< 25ns / 100ns			
Back-Up Fuse (max)		125A gL / gG			
Short-Circuit Current Rating (AC)	I_{SCCR}	25kA			
TOV Withstand 5s	U_T	335V			
	U_T	440V			
TOV 120min	Mode	Safe Fail			
Number of Ports		1			
UL Electrical					
Maximum Continuous Operating Voltage (AC)	MCOV	275V	320V	385V	
Voltage Protection Rating	VPR	900V	1000V	1200V	
Nominal Discharge Current (8/20 μ s)	I_n	5kA	5kA	5kA	
Short-Circuit Current Rating (AC)	I_{SCCR}	25kA	25kA	25kA	
Mechanical & Environmental					
Operating Temperature Range	T_a	-40°F to +158°F [-40°C to +70°C]			
Permissible Operating Humidity	RH	5%...95%			
Atmospheric pressure and altitude		80k Pa ... 106k Pa / -500m ... 2000m			
Terminal Screw Torque	M_{max}	39.9 lbf-in [2.0~2.5 N-m]			
Conductor Cross Section (max)		2 AWG (Solid, Stranded) / 4 AWG (Flexible)			
		35mm ² (Solid, Stranded) / 25mm ² (Flexible)			
Mounting		35mm DIN Rail, EN 60715			
Degree of Protection		IP20(built-in)			
Housing Material		Thermoplastic: Extinguishing Degree UL 94 V-0			
Thermal Protection		Yes			
Operating State / Fault Indication		Green: ok / Red: failure			
Remote Contacts (RC)		Optional			
RC Switching Capacity		AC:250V / 0.5A; DC:250V / 0.1A; 125V / 0.2A; 75V / 0.5A			
RC Conductor Cross Section (max)		16AWG (Solid) / 1.5mm ² (Solid)			

EAP SERIES AC SPD T3 Series

Wiring Method



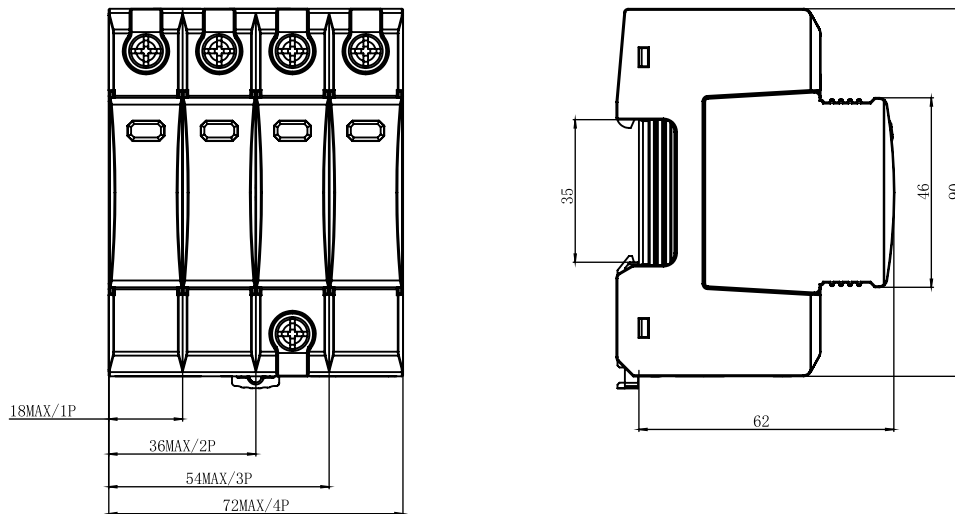
Schematic Diagram



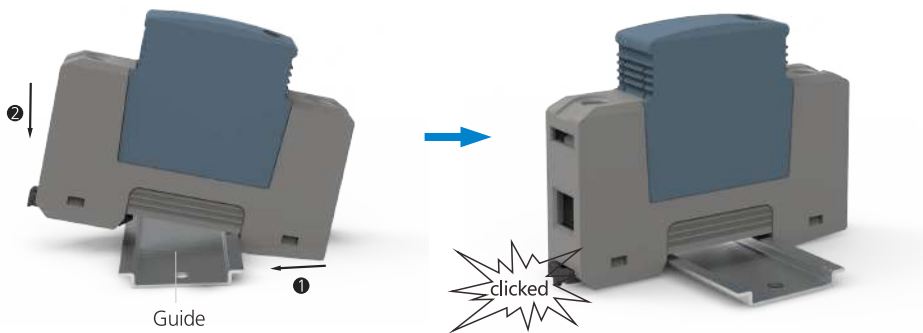
AC Surge Protection Device

EAP SERIES AC SPD T3 Series

Dimensions(mm)



Installation



Disassemble

