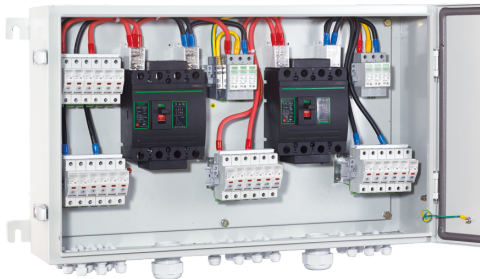
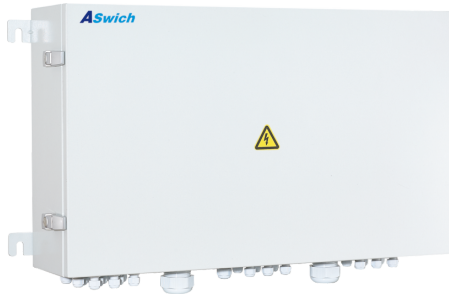


# SOLAR COMBINER BOX

12 in 2 out DC 1000V



ECB/12/2	
<b>General Data</b>	
Model No.	ECB/12/2
Input	12 strings
Output	2 strings
Maximum Voltage	1000V
Max DC Short Circuit Current Per Input (Isc)	15A (Changeable)
Maximum Current Output	125A
<b>Enclosure</b>	
Material Type	Metal
Degree of Protection	IP65
Degree of Resistance to Impacts	IK10
Dimension (WxHxD)	750x450x180mm
Cable input Entry	PG09 Cable Gland, 2.5-16mm <sup>2</sup>
Output Cable Gland	PG36 50-70mm <sup>2</sup>
<b>DC Switch Disconnecter</b>	
Rated Insulation Voltage (Ui)	1000V
Rated Current (Ie)	125A
Standard Compliance with	IEC 60947-3
Certification	CB, TUV, SAA
<b>DC Surge Arrester</b>	
Max Operation Voltage (Ucpv)	1000V
Standard Compliance with	EN 50539 Type 2
Maximum Discharge Current	40 KA
Certification	TUV CE CB
String Monitoring Device	Yes (optional)
Diode for the Function of Anti-Reflux	Yes (optional)
<b>DC fuse holder</b>	
LED Indicator	Yes
Rated Working Voltage	1000V
Fuse Link	10x38mm LITTEL 15A
Certification	TUV, CB, CE
<b>Environment</b>	
Operating Temperature	-20°C ~ +60°C
Humidity	99%
Altitude	2000M
Installation	Wall Mounting

