



This document has been
printed on ecological paper

ASwich

Safety Is On

Email: contact@aswich.com
Fax: +86-21-20950286

As standards, specifications and designs change
from time to time, please ask for confirmation of the
information given in this publication.

www.aswich.com

Aswich all rights reserved.

DISTRIBUTION BOXES

PV COMBINER BOX

Leading Manufacturer Protects Solar Power Safety

version 2021



PV COMBINER BOX

ECB SERIES

PV Combiner Box 1000VDC



1 INPUT 1 OUTPUT 1000VDC



Product Application

Suitable for PV system, equipped with a surge protector and isolator fuses, providing isolation, leakage and grounding protection.

DC Surge Protector

EDPN40-3

- Max Operation Voltage 1000V
- Standard Compliance with EN50539 Type2
- Maximum Discharge Current 40 KA
- Certification TUV,CB,CE

DC Fuse

EDFHN-32

- LED Indicator or without LED indicator
- Rated Working Voltage 1000V
- Fuse Link 10x38mm LITTEL 15A
- Certification TUV,CB,CE



Technical Data

Specification		Wiring diagram
Model Number	ECB/1/1	
Input	1 strings	
Output	1 strings	
Max Voltage	1000V	
Max DC Short Circuit Current Per Input	15A(Changeable)	
Max Current Output	32A	
Enclosure	EDBEU/AU	
Material	Polycarbonate	
Degree of Protection	IP65	
Impacts	IK10	
Dimensions	L273*W215*H118mm	
Cable input Entry	PG09 Cable Gland, 2.5-16mm ²	
Output Cable Gland	PG21,2.5-16mm ²	
DC Switch Disconnecter	EDS1DB/N	
Rated Insulation Voltage	1000V	
Rated Current	32A	
Category	DC21B/PV2	
Standard Compliance with	IEC 60947-3	
Certification	TUV,CB,SAA,CE	
Environment		
Operating temperature	-20°C- +60°C	
Humidity	99%	
Altitude	2000M	
Installation	Wall Mounting	

PV COMBINER BOX

2 INPUT 1 OUTPUT 1000VDC



Product Application

Suitable for PV system, equipped with a surge protector and isolator fuses, providing isolation, leakage and grounding protection.

DC Surge Protector

EDPN40-3

- Max Operation Voltage 1000V
- Standard Compliance with EN50539 Type2
- Maximum Discharge Current 40 KA
- Certification TUV,CB,CE

DC Fuse

EDFHN-32

- LED Indicator or without LED indicator
- Rated Working Voltage 1000V
- Fuse Link 10x38mm LITTEL 15A
- Certification TUV,CB,CE



Technical Data

Specification		Wiring diagram
Model Number	ECB/2/1	
Input	2 strings	
Output	1 strings	
Max Voltage	1000V	
Max DC Short Circuit Current Per Input	15A(Changeable)	
Max Current Output	32A	
Enclosure	EDBEU/AU	
Material	Polycarbonate	
Degree of Protection	IP65	
Impacts	IK10	
Dimensions	L273*W215*H118mm	
Cable input Entry	PG09 Cable Gland, 2.5-16mm ²	
Output Cable Gland	PG21,2.5-16mm ²	
DC Switch Disconnecter	EDS1DB/N	
Rated Insulation Voltage	1000V	
Rated Current	32A	
Category	DC21B/PV2	
Standard Compliance with	IEC 60947-3	
Certification	TUV,CB,SAA,CE	
Environment		
Operating temperature	-20°C - +60°C	
Humidity	99%	
Altitude	2000M	
Installation	Wall Mounting	

2 INPUT 2 OUTPUT 1000VDC



Product Application

Suitable for PV system, equipped with a surge protector and isolator fuses, providing isolation, leakage and grounding protection.

DC Surge Protector

EDPN40-3

- Max Operation Voltage 1000V
- Standard Compliance with EN50539 Type2
- Maximum Discharge Current 40 KA
- Certification TUV,CB,CE

DC Fuse

EDFHN-32

- LED Indicator or without LED indicator
- Rated Working Voltage 1000V
- Fuse Link 10x38mm LITTEL 15A
- Certification TUV,CB,CE



Technical Data

Specification		Wiring diagram
Model Number	ECB/2/2	
Input	2 strings	
Output	2 strings	
Max Voltage	1000V	
Max DC Short Circuit Current Per Input	15A(Changeable)	
Max Current Output	32A	
Enclosure	EDBEU/AU	
Material	Polycarbonate	
Degree of Protection	IP65	
Impacts	IK10	
Dimensions	L273*W365*H118mm	
Cable input Entry	PG09 Cable Gland, 2.5-16mm ²	
Output Cable Gland	PG21,2.5-16mm ²	
DC Switch Disconnecter	EDS1DB/N	
Rated Insulation Voltage	1000V	
Rated Current	32A	
Category	DC21B/PV2	
Standard Compliance with	IEC 60947-3	
Certification	TUV,CB,SAA,CE	
Environment		
Operating temperature	-20°C- +60°C	
Humidity	99%	
Altitude	2000M	
Installation	Wall Mounting	

PV COMBINER BOX

3 INPUT 1 OUTPUT 1000VDC



Product Application

Suitable for PV system, equipped with a surge protector and isolator fuses, providing isolation, leakage and grounding protection.

DC Surge Protector

EDPN40-3

- Max Operation Voltage 1000V
- Standard Compliance with EN50539 Type2
- Maximum Discharge Current 40 KA
- Certification TUV,CB,CE

DC Fuse

EDFHN-32

- LED Indicator or without LED indicator
- Rated Working Voltage 1000V
- Fuse Link 10x38mm LITTEL 15A
- Certification TUV,CB,CE



Technical Data

Specification		Wiring diagram
Model Number	ECB/3/1	
Input	3 strings	
Output	1 strings	
Max Voltage	1000V	
Max DC Short Circuit Current Per Input	15A(Changeable)	
Max Current Output	32A	
Enclosure	EDBEU/AU	
Material	Polycarbonate	
Degree of Protection	IP65	
Impacts	IK10	
Dimensions	L380.8*W215*H118mm	
Cable input Entry	PG09 Cable Gland, 2.5-16mm ²	
Output Cable Gland	PG21,2.5-16mm ²	
DC Switch Disconnecter	EDS1DB/N	
Rated Insulation Voltage	1000V	
Rated Current	32A	
Category	DC21B/PV2	
Standard Compliance with	IEC 60947-3	
Certification	TUV,CB,SAA,CE	
Environment		
Operating temperature	-20°C - +60°C	
Humidity	99%	
Altitude	2000M	
Installation	Wall Mounting	

4 INPUT 1 OUTPUT 1000VDC



Product Application

Suitable for PV system, equipped with a surge protector and isolator fuses, providing isolation, leakage and grounding protection.

DC Surge Protector

EDPN40-3

- Max Operation Voltage 1000V
- Standard Compliance with EN50539 Type2
- Maximum Discharge Current 40 KA
- Certification TUV,CB,CE

DC Fuse

EDFHN-32

- LED Indicator or without LED indicator
- Rated Working Voltage 1000V
- Fuse Link 10x38mm LITTEL 15A
- Certification TUV,CB,CE



Technical Data

Specification		Wiring diagram
Model Number	ECB/4/2	
Input	4 strings	
Output	1 strings	
Max Voltage	1000V	
Max DC Short Circuit Current Per Input	15A(Changeable)	
Max Current Output	63A	
Enclosure	EDBEU/AU	
Material	Polycarbonate	
Degree of Protection	IP65	
Impacts	IK10	
Dimensions	L273*W365*H118mm	
Cable input Entry	PG09 Cable Gland, 2.5-16mm ²	
Output Cable Gland	PG21,2.5-16mm ²	
DC Switch Disconnecter	EDB1-63	
Rated Insulation Voltage	1000V	
Rated Current	63A	
Category	DC21B	
Standard Compliance with	IEC 60947-3	
Certification	TUV,CB,SAA,CE	
Environment		
Operating temperature	-20°C- +60°C	
Humidity	99%	
Altitude	2000M	
Installation	Wall Mounting	

PV COMBINER BOX

4 INPUT 2 OUTPUT 1000VDC



Product Application

Suitable for PV system, equipped with a surge protector and isolator fuses, providing isolation, leakage and grounding protection.

DC Surge Protector

EDPN40-3

- Max Operation Voltage 1000V
- Standard Compliance with EN50539 Type2
- Maximum Discharge Current 40 KA
- Certification TUV,CB,CE

DC Fuse

EDFHN-32

- LED Indicator or without LED indicator
- Rated Working Voltage 1000V
- Fuse Link 10x38mm LITTEL 15A
- Certification TUV,CB,CE



Technical Data

Specification		Wiring diagram
Model Number	ECB/4/2	
Input	4 strings	
Output	2 strings	
Max Voltage	1000V	
Max DC Short Circuit Current Per Input	15A(Changeable)	
Max Current Output	32A	
Enclosure	EDBEU/AU	
Material	Polycarbonate	
Degree of Protection	IP65	
Impacts	IK10	
Dimensions	L273*W365*H118mm	
Cable input Entry	PG09 Cable Gland, 2.5-16mm ²	
Output Cable Gland	PG21,2.5-16mm ²	
DC Switch Disconnecter	EDS1DB/N	
Rated Insulation Voltage	1000V	
Rated Current	32A	
Category	DC21B/PV2	
Standard Compliance with	IEC 60947-3	
Certification	TUV,CB,SAA,CE	
Environment		
Operating temperature	-20°C - +60°C	
Humidity	99%	
Altitude	2000M	
Installation	Wall Mounting	

6 INPUT 2 OUTPUT 1000VDC



Product Application

Suitable for PV system, equipped with a surge protector and isolator fuses, providing isolation, leakage and grounding protection.

DC Surge Protector

EDPN40-3

- Max Operation Voltage 1000V
- Standard Compliance with EN50539 Type2
- Maximum Discharge Current 40 KA
- Certification TUV,CB,CE

DC Fuse

EDFHN-32

- LED Indicator or without LED indicator
- Rated Working Voltage 1000V
- Fuse Link 10x38mm LITTEL 15A
- Certification TUV,CB,CE



Technical Data

Specification		Wiring diagram
Model Number	ECB/6/2	
Input	6 strings	
Output	2 strings	
Max Voltage	1000V	
Max DC Short Circuit Current Per Input	15A(Changeable)	
Max Current Output	32A	
Enclosure	EDBEU/AU	
Material	Polycarbonate	
Degree of Protection	IP65	
Impacts	IK10	
Dimensions	L381*W365*H118mm	
Cable input Entry	PG09 Cable Gland, 2.5-16mm ²	
Output Cable Gland	PG21,2.5-16mm ²	
DC Switch Disconnecter	EDS1DB/N	
Rated Insulation Voltage	1000V	
Rated Current	32A	
Category	DC21B/PV2	
Standard Compliance with	IEC 60947-3	
Certification	TUV,CB,SAA,CE	
Environment		
Operating temperature	-20°C- +60°C	
Humidity	99%	
Altitude	2000M	
Installation	Wall Mounting	

PV COMBINER BOX

EDB SERIES

PV Combiner Box 600VDC / 1000VDC



1 INPUT 1 OUTPUT 600VDC / 1000VDC



Product Application

IP65 DC string box is designed for 1 string PV system. For surge protection and over-load protection at solar DC side.

DC Breaker

EDB1-63

- UL489B design, IEC60947-2 PV&DC standard
- Over-load, short circuit Protection
- Non Polarity for easier wiring

DC Surge Protector

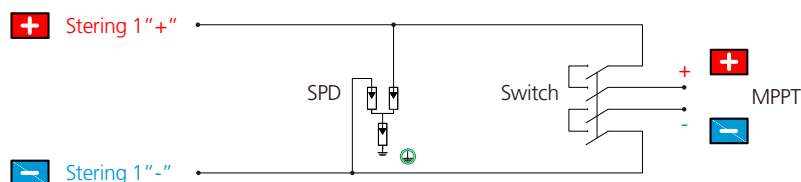
EDPN40-3

- Max Operation Voltage 1000V
- Standard Compliance with EN50539 Type2
- Maximum Discharge Current 40 KA
- Certification TUV, CB, CE



Technical Data

Specification		
Model Number	EDB-1/1	
Input	1 strings	
Output	1 strings	
Max Voltage	600V	1000V
Rated Current of DC Breaker	15A	15A
Max Current Output	63A	40A
Enclosure		
Material	Polycarbonate/ ABS	
Degree of Protection	IP65	
Impacts	IK10	
Dimensions	BX-12: L273*W215*H118mm	
Input Cable Glands	PG09,2.5-16	
Output Cable Gland	PG21,2.5-16	
Environment		
Operating temperature	-25°C- +60°C	
Wiring diagram		



PV COMBINER BOX

2 INPUT 1 OUTPUT 600VDC / 1000VDC



Product Application

IP65 DC string box is designed for 2 string PV system. For surge protection and current protection at solar DC side.

DC Breaker

EDB1-63

- UL489B design, IEC60947-2 PV&DC standard
- Over-load, short circuit Protection
- Non Polarity for easier wiring

DC Surge Protector

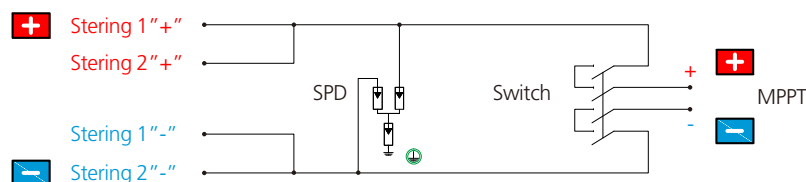
EDPN40-3

- Max Operation Voltage 1000V
- Standard Compliance with EN50539 Type2
- Maximum Discharge Current 40 KA
- Certification TUV, CB, CE



Technical Data

Specification		
Model Number	EDB-2/1	
Input	2 strings	
Output	1 strings	
Max Voltage	600V	1000V
Rated Current of DC Breaker	25A	25A
Max Current Output	63A	40A
Enclosure		
Material	Polycarbonate/ ABS	
Degree of Protection	IP65	
Impacts	IK10	
Dimensions	BX-12: L273*W215*H118mm	
Input Cable Glands	PG09,2.5-16	
Output Cable Gland	PG21,2.5-16	
Environment		
Operating temperature	-25°C- +60°C	
Wiring diagram		



2 INPUT 2 OUTPUT 600VDC / 1000VDC



Product Application

IP65 DC string box is designed for 2 string PV system. For surge protection and current protection at solar DC side.

DC Breaker

EDB1-63

- UL489B design, IEC60947-2 PV&DC standard
- Over-load, short circuit Protection
- Non Polarity for easier wiring

DC Surge Protector

EDPN40-3

- Max Operation Voltage 1000V
- Standard Compliance with EN50539 Type2
- Maximum Discharge Current 40 KA
- Certification TUV, CB, CE



Technical Data

Specification			Wiring diagram
Model Number	EDB-2/2		
Input	2 strings		
Output	2 strings		
Max Voltage	600V	1000V	
Rated Current of DC Breaker	15A	15A	
Max Current Output	63A	40A	
Enclosure			
Material	Polycarbonate/ ABS		
Degree of Protection	IP65		
Impacts	IK10		
Dimensions	BX-12: L273*W215*H118mm		
Input Cable Glands	PG09,2.5-16		
Output Cable Gland	PG21,2.5-16		
Environment			
Operating temperature	-25°C - +60°C		

PV COMBINER BOX

3 INPUT 1 OUTPUT 600VDC / 1000VDC



Product Application

IP65 DC string box is designed for 3 string PV system. For surge protection and current protection at solar DC side.

DC Breaker

EDB1-63

- UL489B design, IEC60947-2 PV&DC standard
- Over-load, short circuit Protection
- Non Polarity for easier wiring

DC Surge Protector

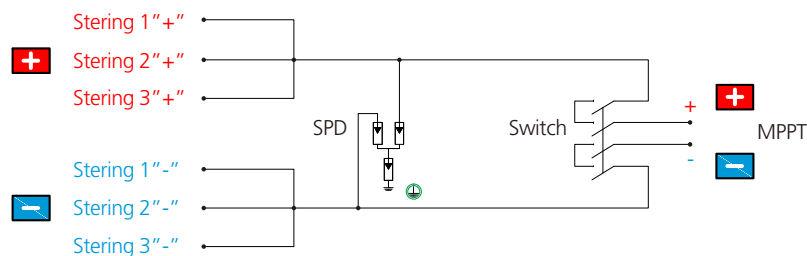
EDPN40-3

- Max Operation Voltage 1000V
- Standard Compliance with EN50539 Type2
- Maximum Discharge Current 40 KA
- Certification TUV, CB, CE



Technical Data

Specification		
Model Number	EDB-3/1	
Input	3 strings	
Output	1 strings	
Max Voltage	600V	1000V
Rated Current of DC Breaker	40A	40A
Max Current Output	63A	40A
Enclosure		
Material	Polycarbonate/ ABS	
Degree of Protection	IP65	
Impacts	IK10	
Dimensions	BX-12: L273*W215*H118mm	
Input Cable Glands	PG09,2.5-16	
Output Cable Gland	PG21,2.5-16	
Environment		
Operating temperature	-25°C- +60°C	
Wiring diagram		



3 INPUT 3 OUTPUT 600VDC / 1000VDC



Product Application

IP65 DC string box is designed for 3 string PV system. For surge protection and current protection at solar DC side.

DC Breaker

EDB1-63

- UL489B design, IEC60947-2 PV&DC standard
- Over-load, short circuit Protection
- Non Polarity for easier wiring

DC Surge Protector

EDPN40-3

- Max Operation Voltage 1000V
- Standard Compliance with EN50539 Type2
- Maximum Discharge Current 40 KA
- Certification TUV, CB, CE



Technical Data

Specification		Wiring diagram	
Model Number	EDB-3/3		
Input	3 strings		
Output	3 strings		
Max Voltage	600V		1000V
Rated Current of DC Breaker	40A		40A
Max Current Output	63A		40A
Enclosure			
Material	Polycarbonate/ ABS		
Degree of Protection	IP65		
Impacts	IK10		
Dimensions	BX-24: L273*W365*H118mm		
Input Cable Glands	PG09,2.5-16		
Output Cable Gland	PG21,2.5-16		
Environment			
Operating temperature	-25°C- +60°C		

PV COMBINER BOX

4 INPUT 2 OUTPUT 600VDC / 1000VDC



Product Application

IP65 DC string box is designed for 4 string PV system. For surge protection and current protection at solar DC side.

DC Breaker

EDB1-63

- UL489B design, IEC60947-2 PV&DC standard
- Over-load, short circuit Protection
- Non Polarity for easier wiring

DC Surge Protector

EDPN40-3

- Max Operation Voltage 1000V
- Standard Compliance with EN50539 Type2
- Maximum Discharge Current 40 KA
- Certification TUV, CB, CE



Technical Data

Specification			Wiring diagram
Model Number	EDB-4/2		
Input	4 strings		
Output	2 strings		
Max Voltage	600V	1000V	
Rated Current of DC Breaker	25A / 25A	25A / 25A	
Max Current Output	63A / 63A	63A / 63A	
Enclosure			
Material	Polycarbonate/ ABS		
Degree of Protection	IP65		
Impacts	IK10		
Dimensions	BX-24: L273*W365*H118mm		
Input Cable Glands	PG09,2.5-16		
Output Cable Gland	PG21,2.5-16		
Environment			
Operating temperature	-25°C- +60°C		

4 INPUT 4 OUTPUT 1000VDC



Product Application

IP65 DC string box is designed for 4 string PV system. For surge protection and current protection at solar DC side.

DC Breaker

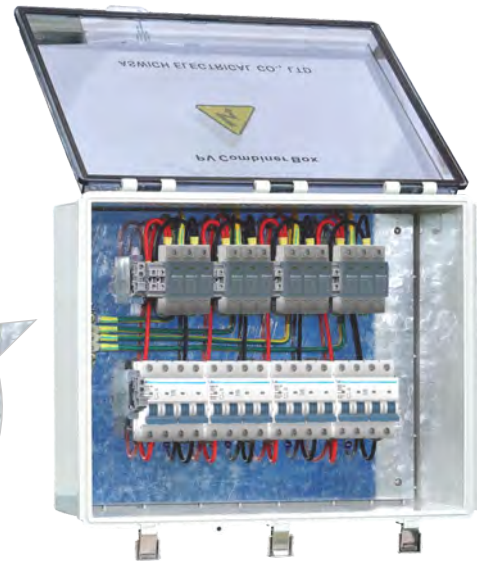
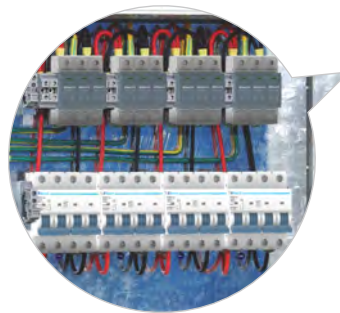
EDB1-63

- UL489B design, IEC60947-2 PV&DC standard
- Over-load, short circuit Protection
- Non Polarity for easier wiring

DC Surge Protector

EDPN40-3

- Max Operation Voltage 1000V
- Standard Compliance with EN50539 Type2
- Maximum Discharge Current 40 KA
- Certification TUV, CB, CE



Technical Data

Specification		Wiring diagram
Model Number	EDB-4/4	
Input	4 strings	
Output	4 strings	
Max Voltage	1000V	
Rated Current of DC Breaker	32A / 32A / 32A / 32A	
Max Current Output	63A / 63A / 63A / 63A	
Enclosure		
Material	Polycarbonate/ ABS	
Degree of Protection	IP65	
Impacts	IK10	
Dimensions	L400*W500*H200mm	
Input Cable Glands	PG09,2.5-16	
Output Cable Gland	PG21,2.5-16	
Environment		
Operating temperature	-25°C - +60°C	

PV COMBINER BOX

6 INPUT 2 OUTPUT 1000VDC



Product Application

IP65 DC string box is designed for 6 string PV system. For surge protection and current protection at solar DC side.

DC Breaker

EDB1-63

- UL489B design, IEC60947-2 PV&DC standard
- Over-load, short circuit Protection
- Non Polarity for easier wiring

DC Surge Protector

EDPN40-3

- Max Operation Voltage 1000V
- Standard Compliance with EN50539 Type2
- Maximum Discharge Current 40 KA
- Certification TUV, CB, CE



Technical Data

Specification		Wiring diagram
Model Number	EDB-6/2	
Input	6 strings	
Output	2 strings	
Max Voltage	1000V	
Rated Current of DC Breaker	40A / 40A	
Max Current Output	63A / 63A	
Enclosure		
Material	Polycarbonate/ ABS	
Degree of Protection	IP65	
Impacts	IK10	
Dimensions	BX-24: L273*W365*H118mm	
Input Cable Glands	PG09,2.5-16	
Output Cable Gland	PG21,2.5-16	
Environment		
Operating temperature	-25°C- +60°C	

6 INPUT 3 OUTPUT 1000VDC



Product Application

IP65 DC string box is designed for 6 string PV system. For surge protection and current protection at solar DC side.

DC Breaker

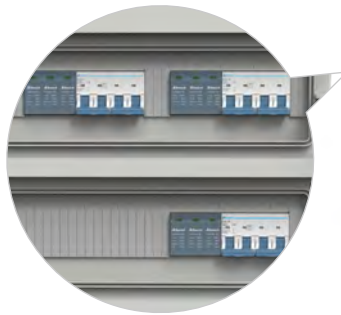
EDB1-63

- UL489B design, IEC60947-2 PV&DC standard
- Over-load, short circuit Protection
- Non Polarity for easier wiring

DC Surge Protector

EDPN40-3

- Max Operation Voltage 1000V
- Standard Compliance with EN50539 Type2
- Maximum Discharge Current 40 KA
- Certification TUV, CB, CE



Technical Data

Specification		Wiring diagram
Model Number	EDB-6/3	
Input	6 strings	
Output	3 strings	
Max Voltage	1000V	
Rated Current of DC Breaker	40A / 40A / 40A	
Max Current Output	40A / 40A / 40A	
Enclosure		
Material	Polycarbonate/ ABS	
Degree of Protection	IP65	
Impacts	IK10	
Dimensions	BX-36: L381*W365*H118mm	
Input Cable Glands	PG09,2.5-16	
Output Cable Gland	PG21,2.5-16	
Environment		
Operating temperature	-25°C- +60°C	

PV COMBINER BOX

6 INPUT 6 OUTPUT 1000VDC



Product Application

IP65 DC string box is designed for 6 string PV system. For surge protection and current protection at solar DC side.

DC Breaker

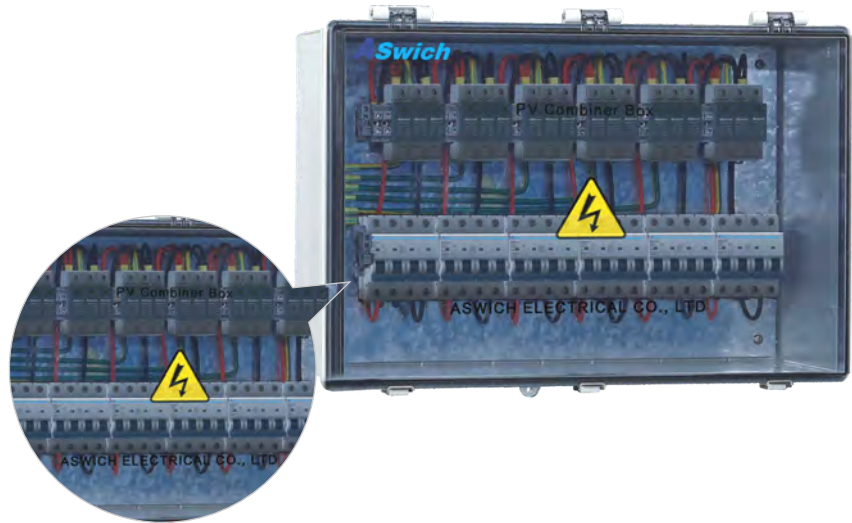
EDB1-63

- UL489B design, IEC60947-2 PV&DC standard
- Over-load, short circuit Protection
- Non Polarity for easier wiring

DC Surge Protector

EDPN40-3

- Max Operation Voltage 1000V
- Standard Compliance with EN50539 Type2
- Maximum Discharge Current 40 KA
- Certification TUV, CB, CE



Technical Data

Specification		Wiring diagram
Model Number	EDB-6/6	
Input	6 strings	
Output	6 strings	
Max Voltage	1000V	
Rated Current of DC Breaker	32A / 32A / 32A / 32A / 32A / 32A	
Max Current Output	40A / 40A / 40A / 40A / 40A / 40A	
Enclosure		
Material	Polycarbonate/ ABS	
Degree of Protection	IP65	
Impacts	IK10	
Dimensions	L400*W600*H230mm	
Input Cable Glands	PG09,2.5-16	
Output Cable Gland	PG21,2.5-16	
Environment		
Operating temperature	-25°C- +60°C	

