

## JHAS69 SERIES

# AC Isolator 690V 80A

Leading Manufacturer Protects Solar Power Safety

Rev1.0 2022/05/09



# JHAS69 SERIES

AC Isolator 690V 80A



# AC ISOLATION SWITCH

## JHAS69 Series AC Isolator 690V 80A



### Features:

JHAS69 isolation switch is widely used in industrial control machinery and various electrical appliances, and can effectively solve the problems of emergency disconnection, safety disconnection, machine control, motor control and so on.

- With alloy contacts, electrical special silver long life and high reliability.
- Small size, space-saving installation.
- Construct a protective finger to make the operation safe.
- With a variety of installation, ease of application of various purpose (panel mount, rail mount, sealed switch box type).
- IP66 degree of protection

### Model and meaning

Model	Meaning
JHAS69	Type Of AC Isolated Switch
PM	Installation: PM, DC, LK, EL
20	Rated Current(A): 20, 32, 40, 63, 80
R	Locking mode: R:Rotating belt lock, Blank:No lock
3	Poles: 3:3P, 4:4P
RY	Handle Options: RY:Rotating red/yellow handle, B:Rotating black handle
64	Rubber Pad: 64:Yes, Blank:No

# JHAS69 Series AC Isolator 690V 80A



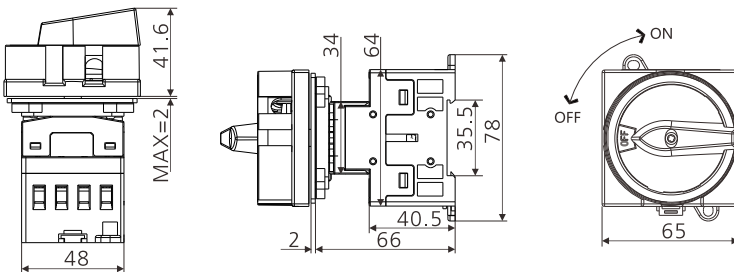
Out of box operation  
Guide rail installation



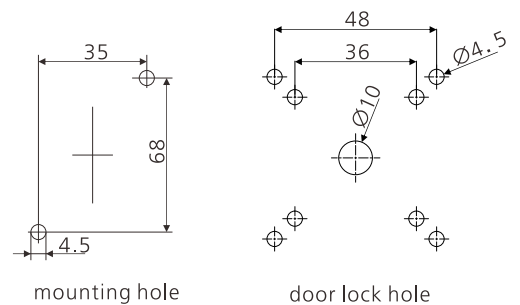
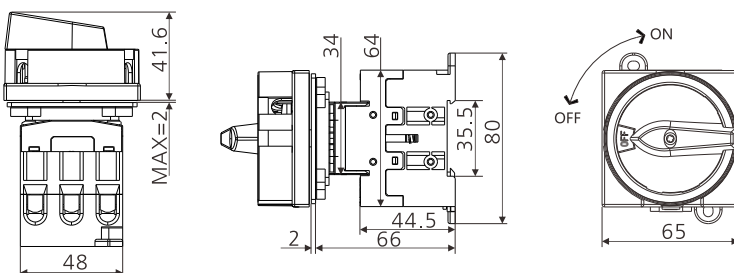
Current Type	20A	32A	40A	63A	80A
Rated carry current	20A	32A	40A	63A	80A
Rated operating current AC-23A	16A	25A	32A	45A	45A
Rated operating current AC-3	12A	23A	30A	37A	37A
Rated power control AC-23A	240V	4KW	7.5KW	9KW	15KW
	440V	7.5KW	12.5KW	16KW	22KW
Rated power control AC-3	240V	3KW	5.5KW	7.5KW	11KW
	440V	5.5KW	11KW	15KW	18.5KW
UL-CSA	240V	3KW	5KW	5KW	10KW
Motor load	440V	7.5KW	10KW	10KW	20KW
Rated short-time withstand current	250A	400A	500A	600A	850A
Cable	0.5-10MM <sup>2</sup>			1-16MM <sup>2</sup>	
Screw torque	0.8-1.7N • m			1.5-2N • m	
Rated insulation voltage	690V				

## Dimension

4Poles 20-40A



3Poles 63-80A



There are 3 installation methods in the picture:  
A: 4 holes, center distance 48 (without gasket)  
B: 4 holes, center distance 36 (4 holes gasket)



# AC ISOLATION SWITCH

## JHAS69 Series AC Isolator 690V 80A



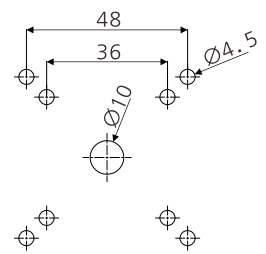
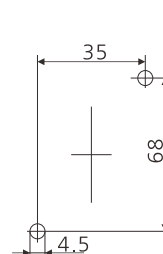
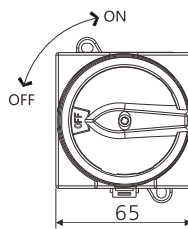
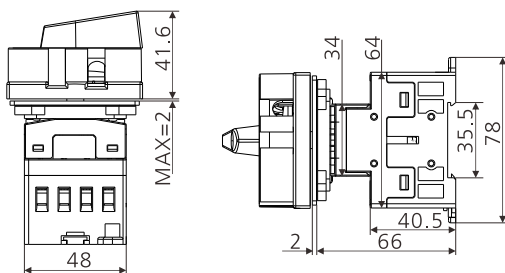
Out of box operation  
Guide rail installation



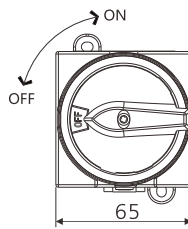
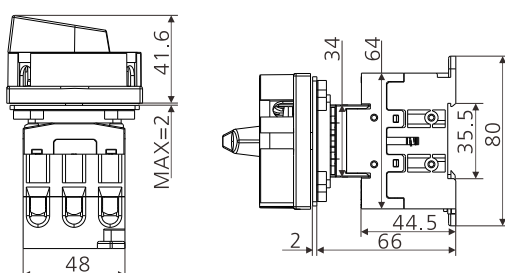
Current	20A	32A	40A	63A	80A
Type	JHAS69-PM20R-4B64	JHAS69-PM32R-4B64	JHAS69-PM40R-4B64	JHAS69-PM63R-3B64	JHAS69-PM80R-3B64
Rated carry current	20A	32A	40A	63A	80A
Rated operating current AC-23A	16A	25A	32A	45A	45A
Rated operating current AC-3	12A	23A	30A	37A	37A
Rated power control AC-23A	240V	4KW	7.5KW	15KW	15KW
	440V	7.5KW	12.5KW	22KW	22KW
Rated power control AC-3	240V	3KW	5.5KW	11KW	11KW
	440V	5.5KW	11KW	18.5KW	18.5KW
UL-CSA	240V	3KW	5KW	10KW	10KW
Motor load	440V	7.5KW	10KW	10KW	20KW
Rated short-time withstand current	250A	400A	500A	600A	850A
Cable	0.5-10MM <sup>2</sup>			1-16MM <sup>2</sup>	
Screw torque	0.8-1.7N • m			1.5-2N • m	
Rated insulation voltage	690V				

### Dimensions

4Poles 20-40A



3Poles 63-80A



mounting hole

door lock hole

There are 3 installation methods in the picture:  
A: 4 holes, center distance 48 (without gasket)  
B: 4 holes, center distance 36 (4 holes gasket)

# JHAS69 Series AC Isolator 690V 80A



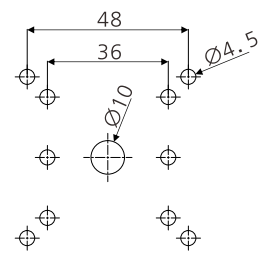
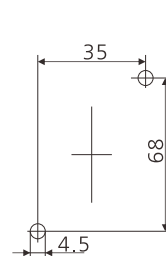
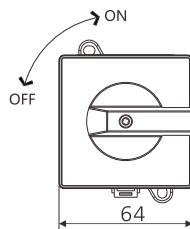
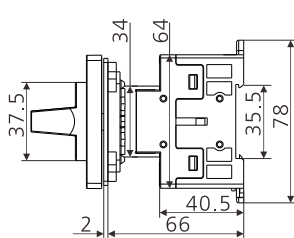
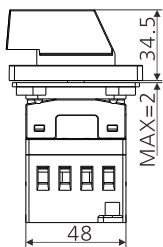
Out of box operation  
Guide rail installation



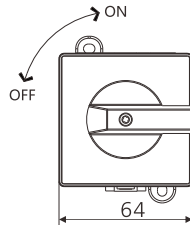
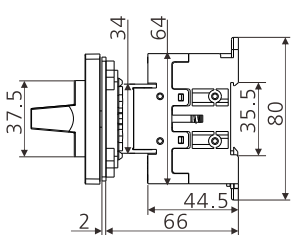
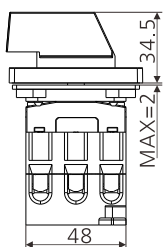
Current Type	20A	32A	40A	63A	80A	
Rated carry current	20A	32A	40A	63A	80A	
Rated operating current AC-23A	16A	25A	32A	45A	45A	
Rated operating current AC-3	12A	23A	30A	37A	37A	
Rated power control AC-23A	240V	4KW	7.5KW	9KW	15KW	15KW
	440V	7.5KW	12.5KW	16KW	22KW	22KW
Rated power control AC-3	240V	3KW	5.5KW	7.5KW	11KW	11KW
	440V	5.5KW	11KW	15KW	18.5KW	18.5KW
UL-CSA	240V	3KW	5KW	5KW	10KW	10KW
Motor load	440V	7.5KW	10KW	10KW	20KW	20KW
Rated short-time withstand current	250A	400A	500A	600A	850A	
Cable	0.5-10MM <sup>2</sup>			1-16MM <sup>2</sup>		
Screw torque	0.8-1.7N • m			1.5-2N • m		
Rated insulation voltage	690V					

## Dimension

4Poles 20-40A



3Poles 63-80A



mounting hole

door lock hole

There are 3 installation methods in the picture:  
 A: 4 holes, center distance 48 (without gasket)  
 B: 4 holes, center distance 36 (4 holes gasket)  
 C: 2 holes, center distance 36 (2 holes gasket)

# AC ISOLATION SWITCH

## JHAS69 Series AC Isolator 690V 80A

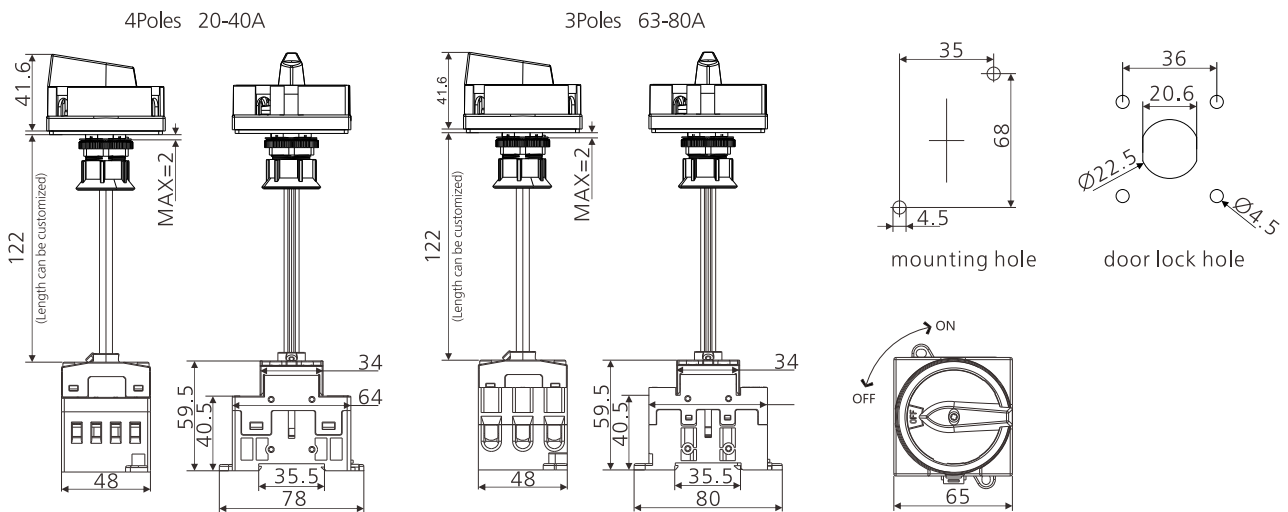


Out of box operation  
Guide rail installation



Current	20A	32A	40A	63A	80A	
Type	JHAS69-DC20R-4RY64	JHAS69-DC32R-4RY64	JHAS69-DC40R-4RY64	JHAS69-DC63R-3RY64	JHAS69-DC80R-3RY64	
Rated carry current	20A	32A	40A	63A	80A	
Rated operating current AC-23A	16A	25A	32A	45A	45A	
Rated operating current AC-3	12A	23A	30A	37A	37A	
Rated power control AC-23A	240V	4KW	7.5KW	9KW	15KW	15KW
	440V	7.5KW	12.5KW	16KW	22KW	22KW
Rated power control AC-3	240V	3KW	5.5KW	7.5KW	11KW	11KW
	440V	5.5KW	11KW	15KW	18.5KW	18.5KW
UL-CSA	240V	3KW	5KW	5KW	10KW	10KW
Motor load	440V	7.5KW	10KW	10KW	20KW	20KW
Rated short-time withstand current	250A	400A	500A	600A	850A	
Cable	0.5-10MM <sup>2</sup>			1-16MM <sup>2</sup>		
Screw torque	0.8-1.7N • m			1.5-2N • m		
Rated insulation voltage	690V					

### Dimensions



# JHAS69 Series AC Isolator 690V 80A

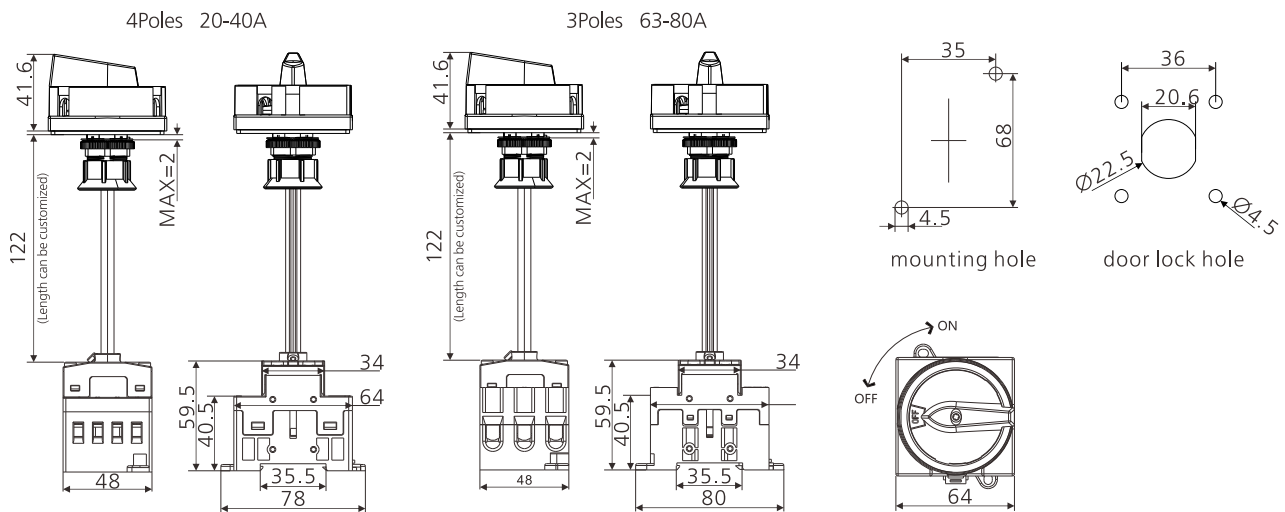


Out of box operation  
Guide rail installation



Current		20A	32A	40A	63A	80A
Type		JHAS69-DC20R-4B64	JHAS69-DC32R-4B64	JHAS69-DC40R-4B64	JHAS69-DC63R-3B64	JHAS69-DC80R-3B64
Rated carry current		20A	32A	40A	63A	80A
Rated operating current AC-23A		16A	25A	32A	45A	45A
Rated operating current AC-3		12A	23A	30A	37A	37A
Rated power control AC-23A	240V	4KW	7.5KW	9KW	15KW	15KW
	440V	7.5KW	12.5KW	16KW	22KW	22KW
Rated power control AC-3	240V	3KW	5.5KW	7.5KW	11KW	11KW
	440V	5.5KW	11KW	15KW	18.5KW	18.5KW
UL-CSA	240V	3KW	5KW	5KW	10KW	10KW
Motor load	440V	7.5KW	10KW	10KW	20KW	20KW
Rated short-time withstand current		250A	400A	500A	600A	850A
Cable		0.5-10MM <sup>2</sup>			1-16MM <sup>2</sup>	
Screw torque		0.8-1.7N · m			1.5-2N · m	
Rated insulation voltage		690V				

## Dimension

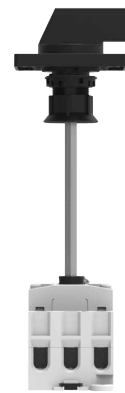


# AC ISOLATION SWITCH

## JHAS69 Series AC Isolator 690V 80A

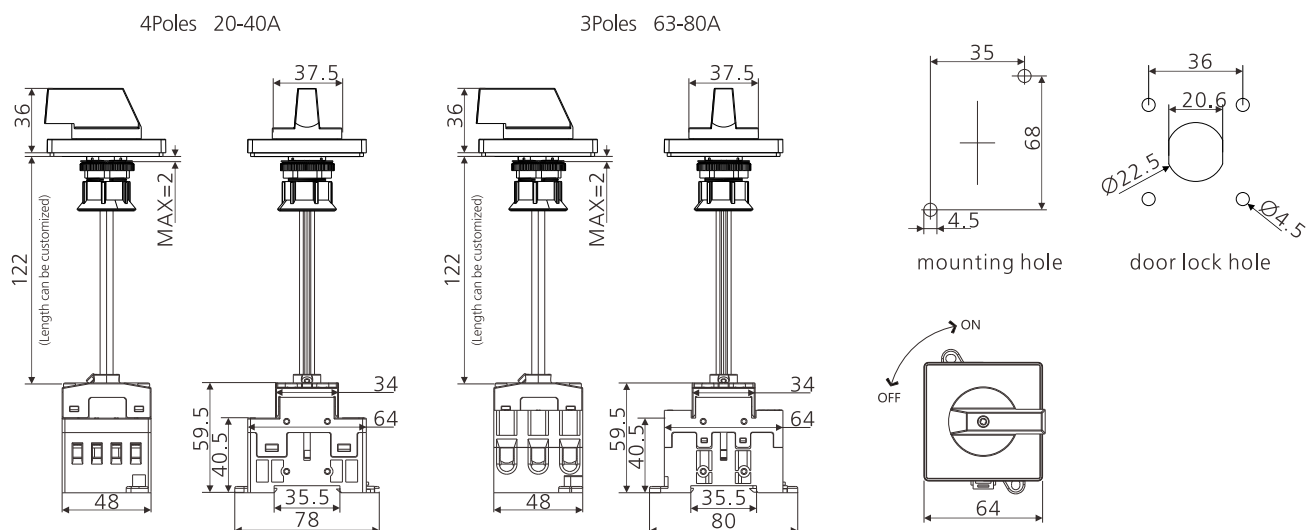


Out of box operation  
Guide rail installation

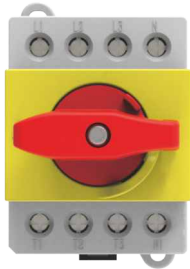


Current	20A	32A	40A	63A	80A
Type	JHAS69-DC20-4	JHAS69-DC32-4	JHAS69-DC40-4	JHAS69-DC63-3	JHAS69-DC80-3
Rated carry current	20A	32A	40A	63A	80A
Rated operating current AC-23A	16A	25A	32A	45A	45A
Rated operating current AC-3	12A	23A	30A	37A	37A
Rated power control AC-23A	240V	4KW	7.5KW	9KW	15KW
	440V	7.5KW	12.5KW	16KW	22KW
Rated power control AC-3	240V	3KW	5.5KW	7.5KW	11KW
	440V	5.5KW	11KW	15KW	18.5KW
UL-CSA	240V	3KW	5KW	5KW	10KW
	440V	7.5KW	10KW	10KW	20KW
Rated short-time withstand current	250A	400A	500A	600A	850A
Cable	0.5-10MM <sup>2</sup>			1-16MM <sup>2</sup>	
Screw torque	0.8-1.7N • m			1.5-2N • m	
Rated insulation voltage	690V				

### Dimensions



# JHAS69 Series AC Isolator 690V 80A

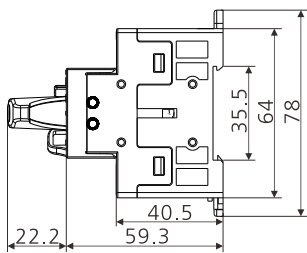


35-Rail mounting  
/screw mounting

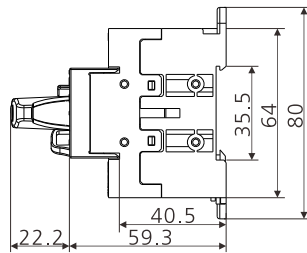
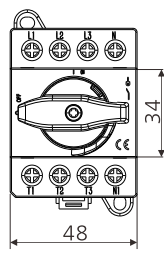


Current Type	20A	32A	40A	63A	80A	
Type	JHAS69-LK20-4RY	JHAS69-LK32-4RY	JHAS69-LK40-4RY	JHAS69-LK63-3RY	JHAS69-LK80-3RY	
Rated carry current	20A	32A	40A	63A	80A	
Rated operating current AC-23A	16A	25A	32A	45A	45A	
Rated operating current AC-3	12A	23A	30A	37A	37A	
Rated power control AC-23A	240V	4KW	7.5KW	9KW	15KW	15KW
	440V	7.5KW	12.5KW	16KW	22KW	22KW
Rated power control AC-3	240V	3KW	5.5KW	7.5KW	11KW	11KW
	440V	5.5KW	11KW	15KW	18.5KW	18.5KW
UL-CSA	240V	3KW	5KW	5KW	10KW	10KW
Motor load	440V	7.5KW	10KW	10KW	20KW	20KW
Rated short-time withstand current	250A	400A	500A	600A	850A	
Cable	0.5-10MM <sup>2</sup>			1-16MM <sup>2</sup>		
Screw torque	0.8-1.7N • m			1.5-2N • m		
Rated insulation voltage	690V					

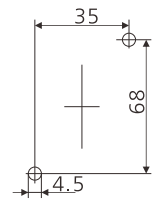
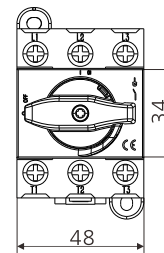
## Dimension



4Poles 20-40A



3Poles 63-80A

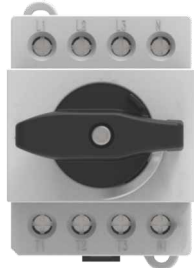


screw hole



# AC ISOLATION SWITCH

## JHAS69 Series AC Isolator 690V 80A

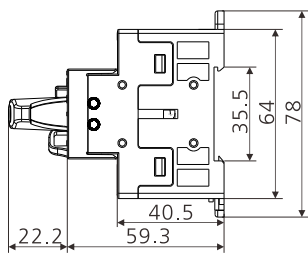


35-Rail mounting  
/screw mounting

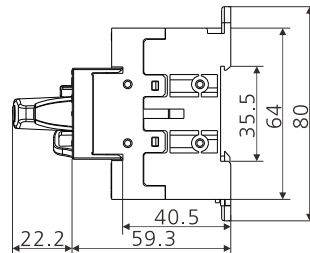
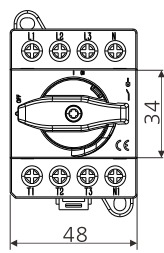


Current Type		20A	32A	40A	63A	80A
		JHAS69-LK20-4	JHAS69-LK32-4	JHAS69-LK40-4	JHAS69-LK63-3	JHAS69-LK80-3
Rated carry current		20A	32A	40A	63A	80A
Rated operating current AC-23A		16A	25A	32A	45A	45A
Rated operating current AC-3		12A	23A	30A	37A	37A
Rated power control AC-23A	240V	4KW	7.5KW	9KW	15KW	15KW
	440V	7.5KW	12.5KW	16KW	22KW	22KW
Rated power control AC-3	240V	3KW	5.5KW	7.5KW	11KW	11KW
	440V	5.5KW	11KW	15KW	18.5KW	18.5KW
UL-CSA	240V	3KW	5KW	5KW	10KW	10KW
Motor load	440V	7.5KW	10KW	10KW	20KW	20KW
Rated short-time withstand current		250A	400A	500A	600A	850A
Cable		0.5-10MM <sup>2</sup>			1-16MM <sup>2</sup>	
Screw torque		0.8-1.7N • m			1.5-2N • m	
Rated insulation voltage		690V				

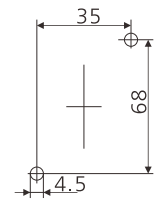
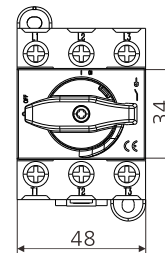
### Dimensions



4Poles 20-40A

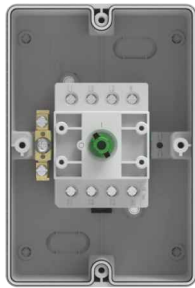


3Poles 63-80A



screw hole

# JHAS69 Series AC Isolator 690V 80A

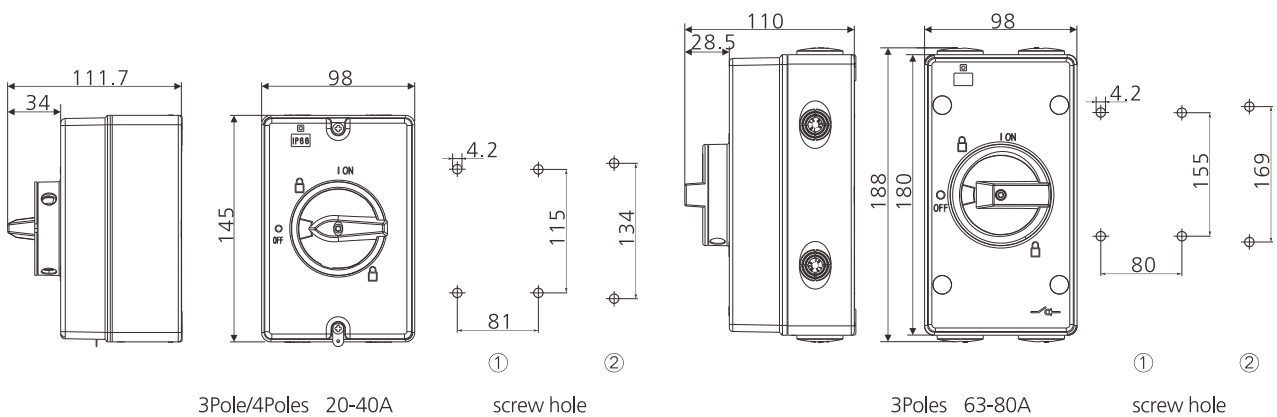


Enclosure mounting



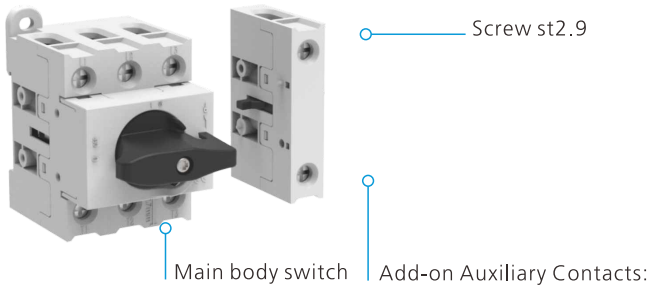
Current Type	20A	32A	40A	63A	80A	
Rated carry current	20A	32A	40A	63A	80A	
Rated operating current AC-23A	16A	25A	32A	45A	45A	
Rated operating current AC-3	12A	23A	30A	37A	37A	
Rated power control AC-23A	240V	4KW	7.5KW	9KW	15KW	15KW
	440V	7.5KW	12.5KW	16KW	22KW	22KW
Rated power control AC-3	240V	3KW	5.5KW	7.5KW	11KW	11KW
	440V	5.5KW	11KW	15KW	18.5KW	18.5KW
UL-CSA	240V	3KW	5KW	5KW	10KW	10KW
Motor load	440V	7.5KW	10KW	10KW	20KW	20KW
Rated short-time withstand current	250A	400A	500A	600A	850A	
Cable	0.5-10MM <sup>2</sup>			1-16MM <sup>2</sup>		
Screw torque	0.8-1.7N • m			1.5-2N • m		
Rated insulation voltage	690V					







## Dimension

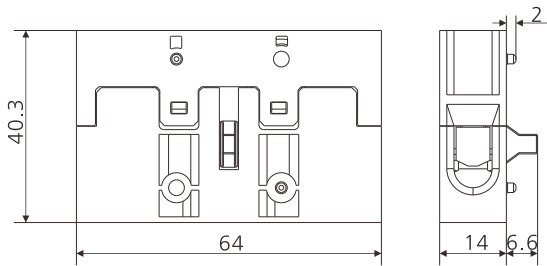


# AC ISOLATION SWITCH

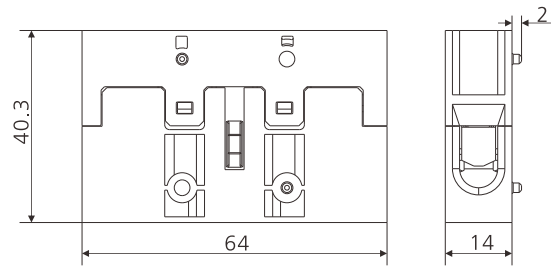
## JHAS69 Series Add-on



Appearance	Type	Rated operation current	Applied to	Circuit diagram
	JHAC69-ACC01	80A	JHAS69	
	JHAC69-ACC02	80A	JHAS69	
	JHAC69-ACC03	-	JHAS69	



JHAC69-ACC01/02



JHAC69-ACC03